

**Shannon Street**

**Petrie Terrace Photo Study**

**Brisbane History Group**

**[bhg4000@brisbanehistorygroup.org.au](mailto:bhg4000@brisbanehistorygroup.org.au)**







**c1983**



**November 2023**

**Shannon Street looking north**

**No earlier image ('New build' - aerial images suggest after 2002, Google before 2008)**



**November 2023**

**No 2 Shannon Street**





**c1983**



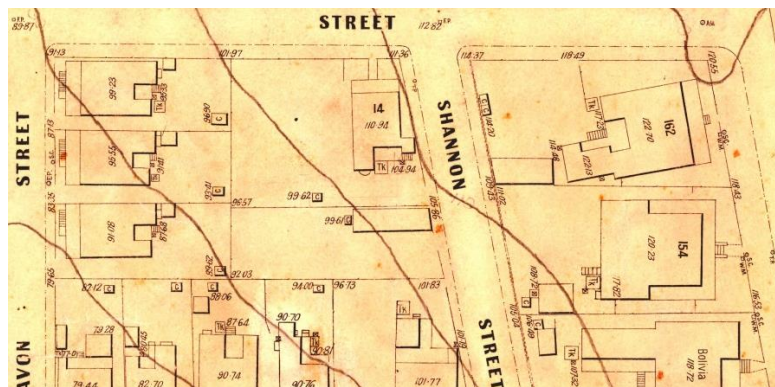
**November 2023**

**No 4 Shannon Street**



*c1983 and 2023 Images of No 14 Pratten Street*

*We have included this house for no reason other than it has us somewhat confused. All the external clues suggest it fronts and should be addressed as Shannon Street. The 1927 Metropolitan Water Supply and Sewerage Plan below has No 14 oriented north-south on a large corner block. By 1961 the block had been subdivided to accommodate No 4 Shannon Street. The two houses appear to be of the same era, or perhaps No 14 was rotated and shifted on the block, which could explain its address*



*(Brisbane City Archives and QImagery)*

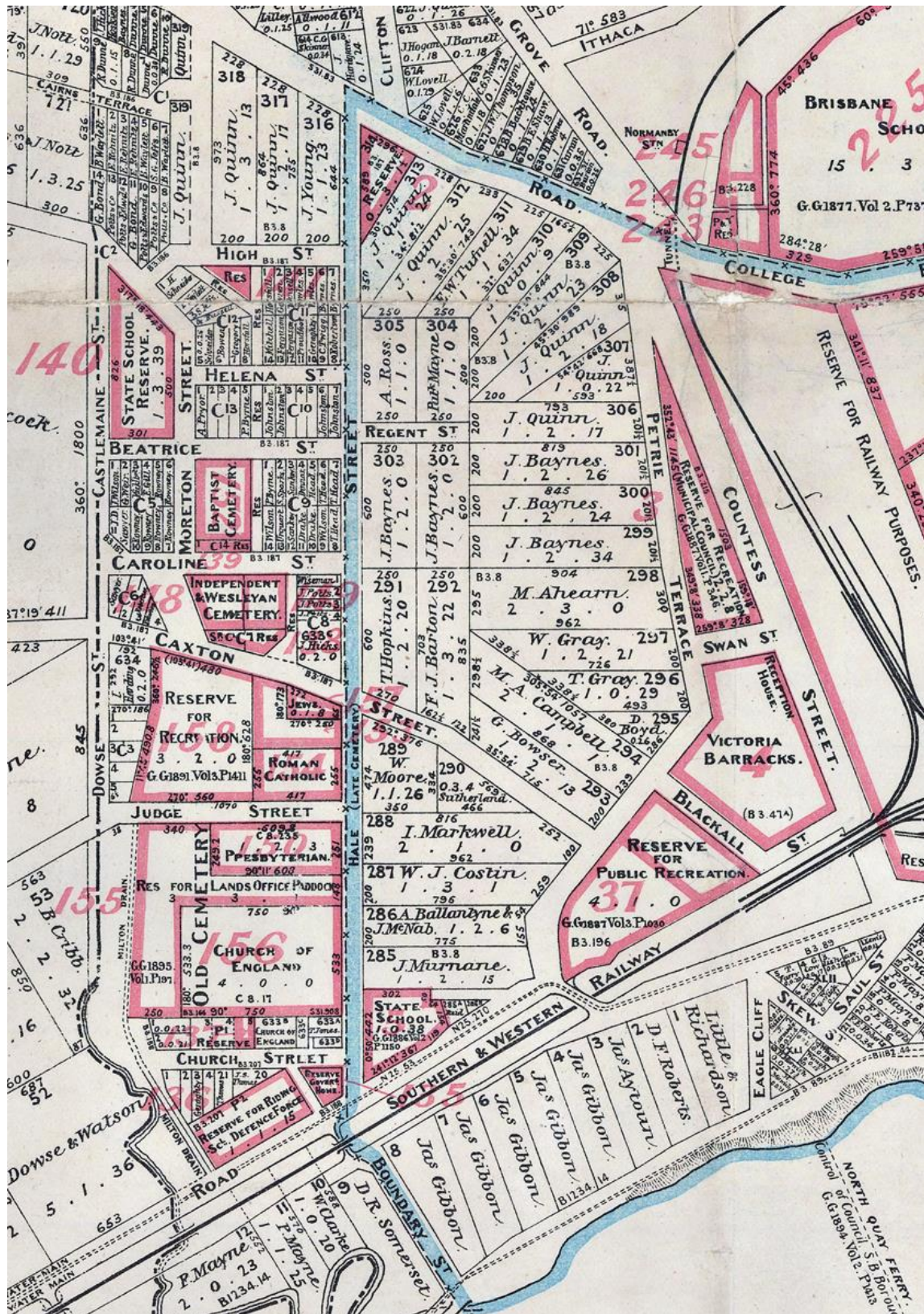




**c1983**

**Shannon Street looking south**





July 1900 Plan of City of Brisbane & Suburbs according to the original land grants  
(Surveyor General's Office –State Library of Queensland)





*1951 Part aerial photograph BCC 000539333  
(Queensland Government -QImagery)*